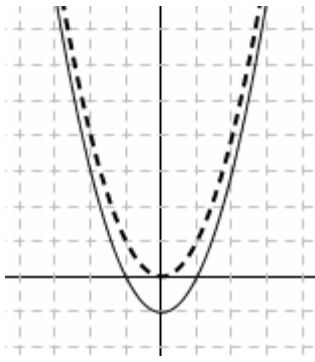
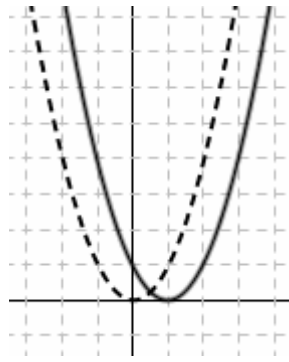


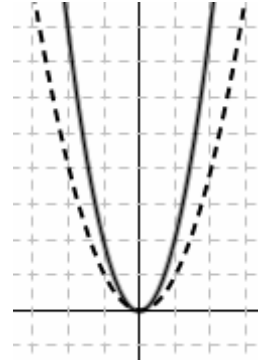
MANIPOLAZIONE DI GRAFICI - CORREZIONE



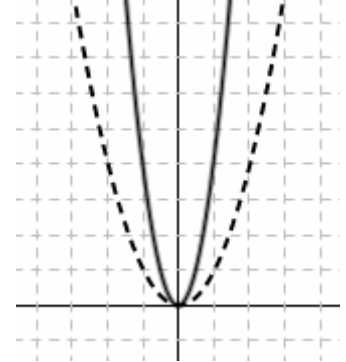
$$f(x) \rightarrow f(x) - 1$$



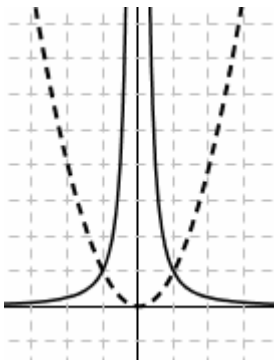
$$f(x) \rightarrow f(x-1)$$



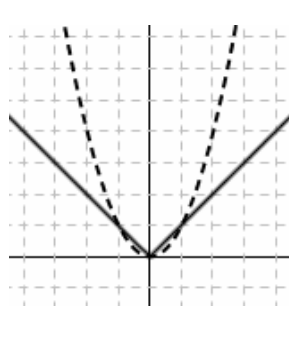
$$f(x) \rightarrow 2f(x)$$



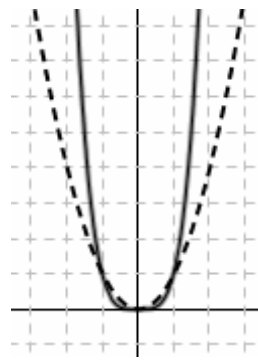
$$f(x) \rightarrow f(2x)$$



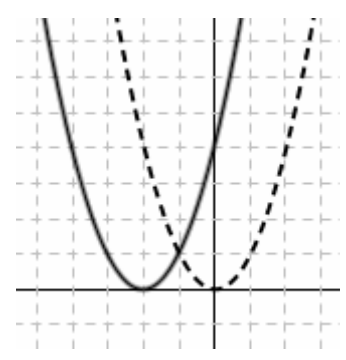
$$f(x) \rightarrow \frac{1}{f(x)}$$



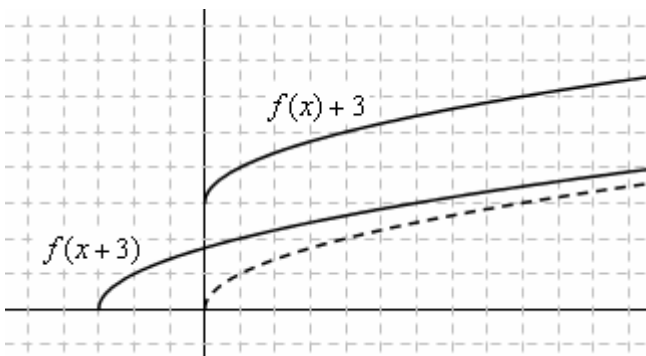
$$f(x) \rightarrow \sqrt{f(x)}$$



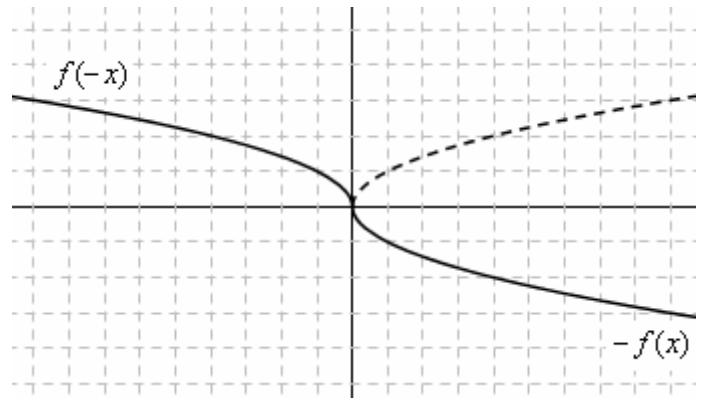
$$f(x) \rightarrow [f(x)]^2$$



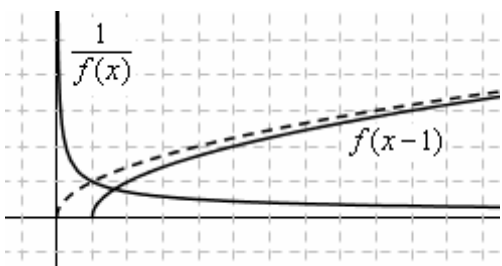
$$f(x) \rightarrow f(x+2)$$



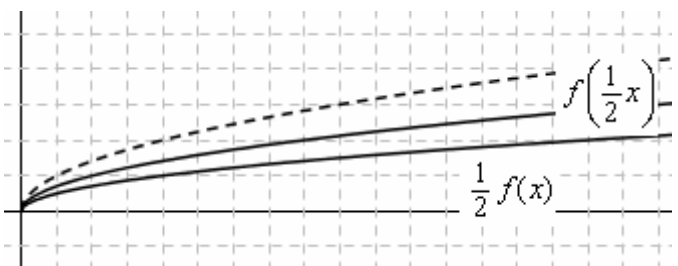
$$f(x) \rightarrow f(x)+3 \text{ e } f(x) \rightarrow f(x+3)$$



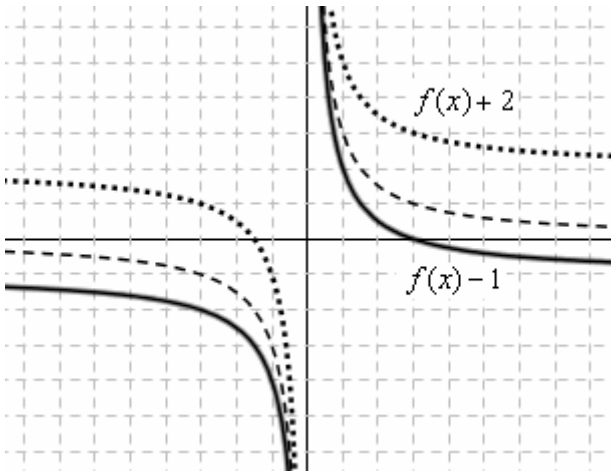
$$f(x) \rightarrow -f(x) \text{ e } f(x) \rightarrow f(-x)$$



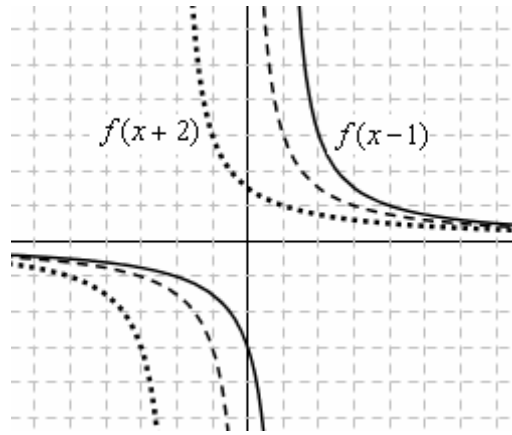
$$f(x) \rightarrow \frac{1}{f(x)} \text{ e } f(x) \rightarrow f(x-1)$$



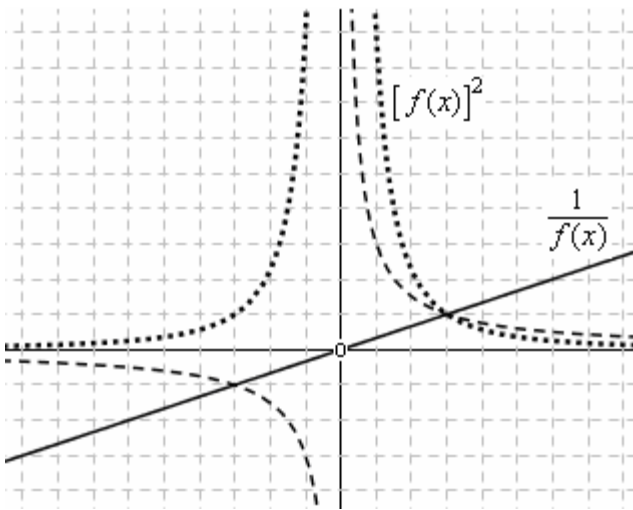
$$f(x) \rightarrow \frac{1}{2}f(x) \text{ e } f(x) \rightarrow f\left(\frac{1}{2}x\right)$$



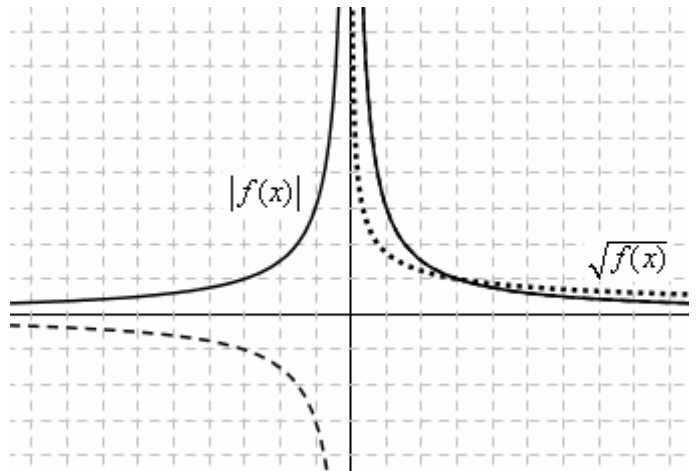
$f(x) \rightarrow f(x)-1$  e  $f(x) \rightarrow f(x)+2$



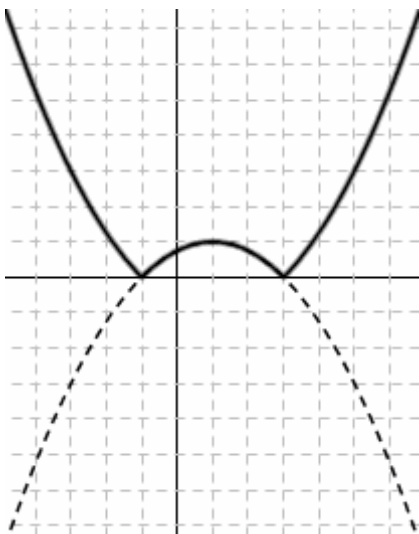
$f(x) \rightarrow f(x-1)$  e  $f(x) \rightarrow f(x+2)$



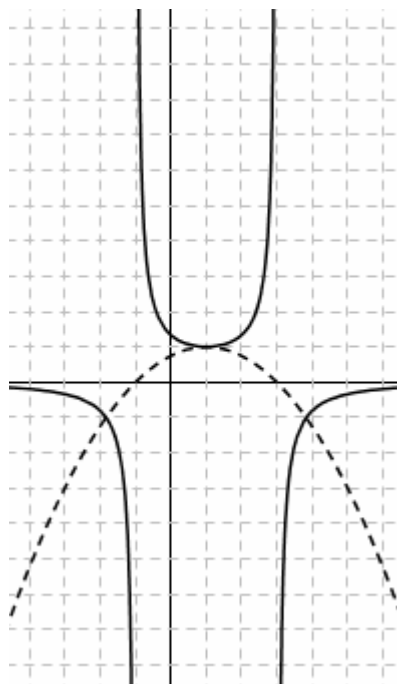
$f(x) \rightarrow \frac{1}{f(x)}$  e  $f(x) \rightarrow [f(x)]^2$   
*quest'ultima funzione non esiste con  $x=0$*



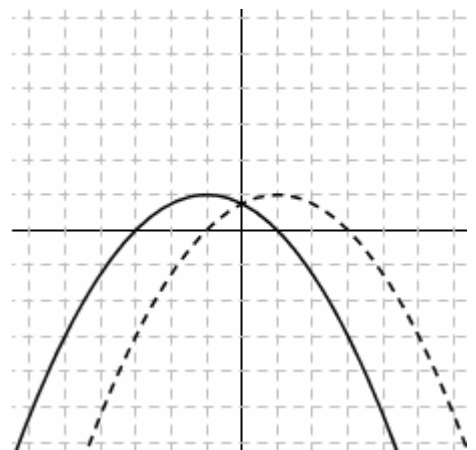
$f(x) \rightarrow |f(x)|$  e  $f(x) \rightarrow \sqrt{f(x)}$



$f(x) \rightarrow |f(x)|$



$f(x) \rightarrow 1/f(x)$



$f(x) \rightarrow f(-x)$